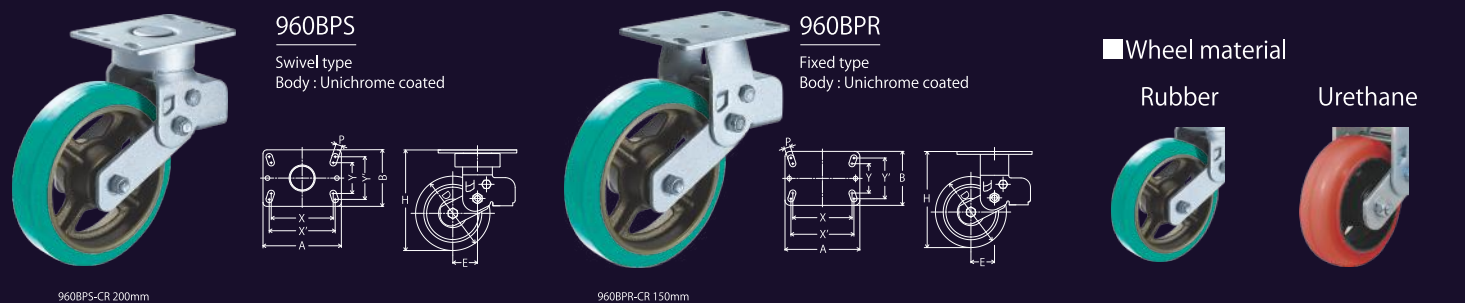
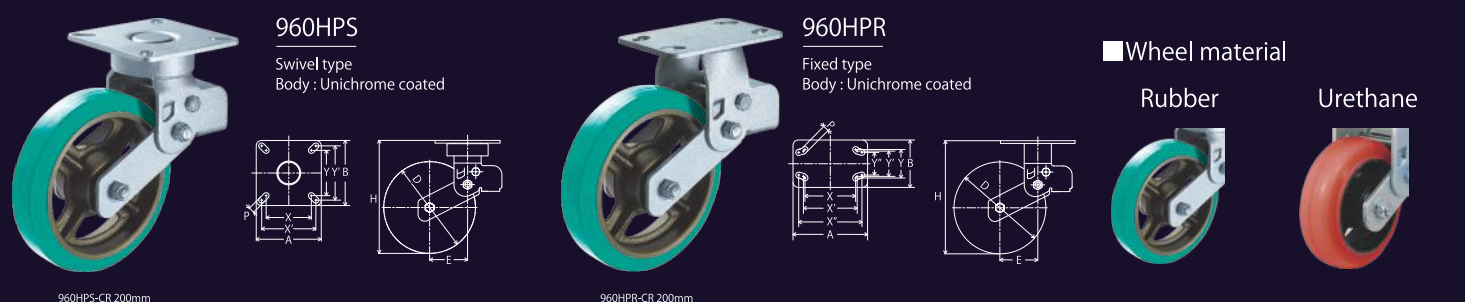


960BPS (Swivel type) / 960BPR (Fixed type)



Product code			Set load 1pc(daN)	Wheel composition 【Tread base】 Cast iron hub with ball bearing	Overall height H mm	Top Plate A×Bmm	Fitting Pitch X×Ymm(X'×Y')mm	Fastening hole dia. P mm	Offset E mm	Swivel radius mm	Tread width mm
Model No.	Wheel	Size (mm)									
960 BPS	- CR	150	125	Rubber tread wheel	204~194	158×114	125×62 (133×86)	13	50 ~ 55	132	50
	- CU			Urethane tread wheel							
	- CR	200	125	Rubber tread wheel	250~235	158×114	125×62 (133×86)	13	84 ~ 92	194	50
	- CU			Urethane tread wheel							
960 BPR	- CR	150	125	Rubber tread wheel	204~194	158×114	125×62 (133×86)	13	—	—	50
	- CU			Urethane tread wheel							
	- CR	200	125	Rubber tread wheel	250~235	158×114	125×62 (133×86)	13	—	—	50
	- CU			Urethane tread wheel							

960HPS (Swivel type) / 960HPR (Fixed type)



Product code			Set load 1pc(daN)	Wheel composition 【Tread base】 Cast iron hub with ball bearing	Overall height H mm	Top Plate A×Bmm	Fitting Pitch X×Ymm(X'×Y')mm	Fastening hole dia. P mm	Offset E mm	Swivel radius mm	Tread width mm
Model No.	Wheel	Size (mm)									
960 HPS	- CR	200	125	Rubber tread wheel	250~235	144×144	100×100 (120×120)	13	84 ~ 92	194	50
	- CU			Urethane tread wheel							
960 HPR	- CR	200	125	Rubber tread wheel	250~235	165×105	112×63 (119×56) (140×50)	13	—	—	50
	- CU			Urethane tread wheel							

HPS HPR models only take in 200mm wheels.

*(X' x Y") is a pitch applicable to HPR model only.



- 1) The set load indicates the load that provides the most cushioning effect on vibration.
- 2) The set load may vary depending on the location of the casters, running speed and road conditions.
- 3) Please make sure to apply swivel casters for front-wheels and fixed casters for back-wheels.




● **Manufacturing Factory**
Headquarters factory
4-7-35, Nishi-Iwata, Higashi-Osaka, Osaka 578-0947 Japan
Hirakata factory
3-2-1, Shodaidajika, Hirakata, Osaka 573-1132 Japan



● **Hammer Caster Sales Co., Ltd. (as Sales company)**
Tokyo Branch
6-5-4, Shimbashi, Minato-ku, Tokyo 105-0004 Japan
Osaka Branch
1-2-6, Aramoto, Higashi-Osaka, Osaka 577-0023 Japan

■ Please feel free to ask for any caster consultancy.
E-mail : info@hammer-caster.co.jp
Web : www.hammer-caster.com

■ Click and follow our official SNS accounts.
 www.facebook.com/hammercasteroofficial/

 www.instagram.com/hammer_caster_official/
Copyright © 2024 Hammer Caster Co., Ltd. All Rights Reserved.

The built-in spring buffers heavy load impacts.

Cushion Caster 960 series



Applicable to heavy loading.

Set Load 125daN

*The set load indicates the load that provides the most cushioning effect on vibration.

*The set Load when using 4 casters is 500 daN.

Buffering Impacts

Robust & Durable

Stable & Smooth

Flexible Application

Dumper rubber and built-in spring buffer impacts

■ The excellent buffering effect prevents the goods from falling or being damaged.

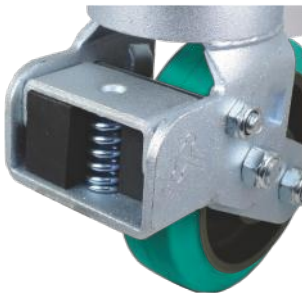
Product Features



960BPS-CU 150



960BPS-CR 200



▲Sectional image

Buffering Impacts

- The built-in spring and rubber dumper creates the excellent buffering effect.
- The travel vibration is reduced to 1/10 muting the noise.

Robust & Durable

- Highly durable due to the very think sheet used for body and cast iron wheel.
- The swivel section is dust-free with ball bearing installed, which cuts off the running cost.

Stable & Smooth

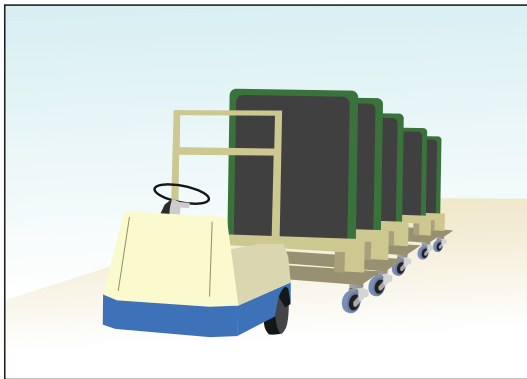
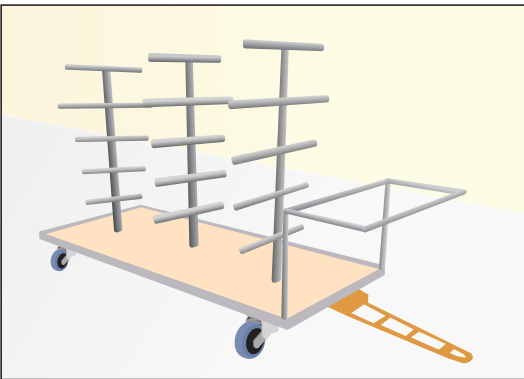
- The ball bearings installed the swivel section and wheel bore help a long-term quality keeping.
- Labour saving by the smooth and stable travelling performance.

Flexible Application

- Available in swivel type and fixed type. Fitting pitch has 2 variations on each model.
- The fitting pitch has a range of tolerance for flexible application.

Installation images

- Used for power traction trucks in automobile manufacturing plants and transport trucks in forkless distribution warehouses.



from travelling. Vibration is reduced to 1/10.

■ Cushion caster for heavy duties, useful for safety measures and efficiency improvement at the working site.

Vibration acceleration table

Comparison between cushion caster 960BPS and standard caster 420S.



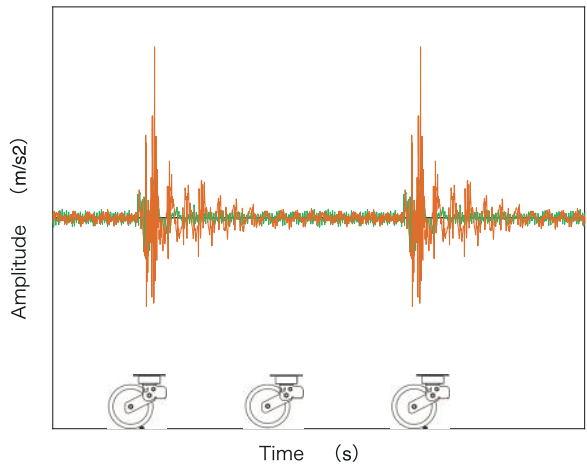
400S-RBB 200



960BPS-CR 200

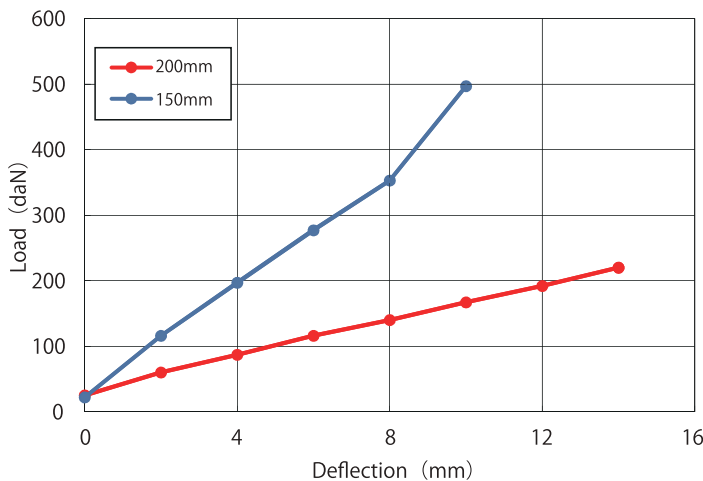
time axis waveform

— 400S-RBB200mm — 960BPS-CR200mm



Load strain data

Data table showing relationship between load and deflection of cushion casters 960 BPS.



単位 : daN

Wheel size	Deflection							
	0mm	2mm	4mm	6mm	8mm	10mm	12mm	14mm
150mm	22	116	197	277	353	497		
200mm	25	60	87	116	140	167	192	220

*Wheel deflection is not included.

Wheels



- Rubber wheel (CR) :** The soft running prevents damage to the floor and reduces noise.
- Being excellent in cushioning properties, gray wheels prevent contamination of the floor.



- Urethane wheel (CU) :** Light and smooth running reduces the burden on workers.
- Excellent in oil resistance and wear resistance. Providing a long service life.
- *Due to the nature of the material, the cushioning effect may not be obtained sufficiently.